

Bushfire Warning System

- ADVICE**: A fire has started but there is no immediate threat to lives or homes.
- WATCH AND ACT**: There is a possible threat to lives or homes. You need to leave or get ready to defend - Do not wait and die.
- EMERGENCY WARNING**: You are in danger and need to take immediate action to survive.
- ALL CLEAR**: Take care to avoid any dangers and keep up to date.

CONTACT	PHONE
Emergency	000
DFES (Emergency Info)	13 DFES (13 3337)



St Joseph's Catholic School
51 Allair Street, Southern Cross
SHIRE OF YILGARN

----- **LEGEND** -----

- School Site
- Evacuation Routes
- Evacuation Centres
- Emergency / Safer Location
- Emergency Evacuation Centre
- Bushfire Response Zones**
- Bushfire Awareness (Monitor) Zone
- Bushfire Awareness (Prepare) Zone
- Shelter in Place

EVACUATION ROUTES

Location as directed by the INCIDENT CONTROLLER

Evacuation Route
Southern Cross Community Hall
Exit School head southeast Allair Street
Turn left onto Canopus Street;
At the round-about, take the 2nd exit onto Antaresis Street.
Community Hall will be on the left.

Evacuation Route

Southern Cross Sporting Complex & Oval
Exit School head southeast Allair Street
Turn left onto Canopus Street;
Go through round-about, 170m;
Southern Cross Sporting Complex will be on the right.



LOCALITY



Aerial Imagery: Landgate/SIP
Image Date: Oct 2017
Coordinates System: GDA 1984 MGA Zone 50
Projection: Universal Transverse Mercator Units: Metric
Map created by: Ian Ross 27/11/2019
Map updated by: Ian Ross 27/11/2019
BUSHFIRE PLANNING
Please refer to any information depicted.

Disclaimer: This map has been prepared for bushfire management planning purposes only. All depicted areas, contours and any dimensions shown are subject to survey. Bushfire Proactive Planning does not guarantee that this map is without flaw or any kind and disclaims all liability for any errors, loss or other consequences arising from relying on any information depicted.



St Joseph's Catholic School
 51 Altair Street, Southern Cross
 SHIRE OF YILGARN

- LEGEND**
- School Site
 - Hydrant
 - - - - - Evacuation Routes
 - Evacuation Centres
 - AA Emergency / Safer Location
 - Emergency Safer Location Zones
 - 2 k/W m² Distance
 - 10 k/W m² Distance

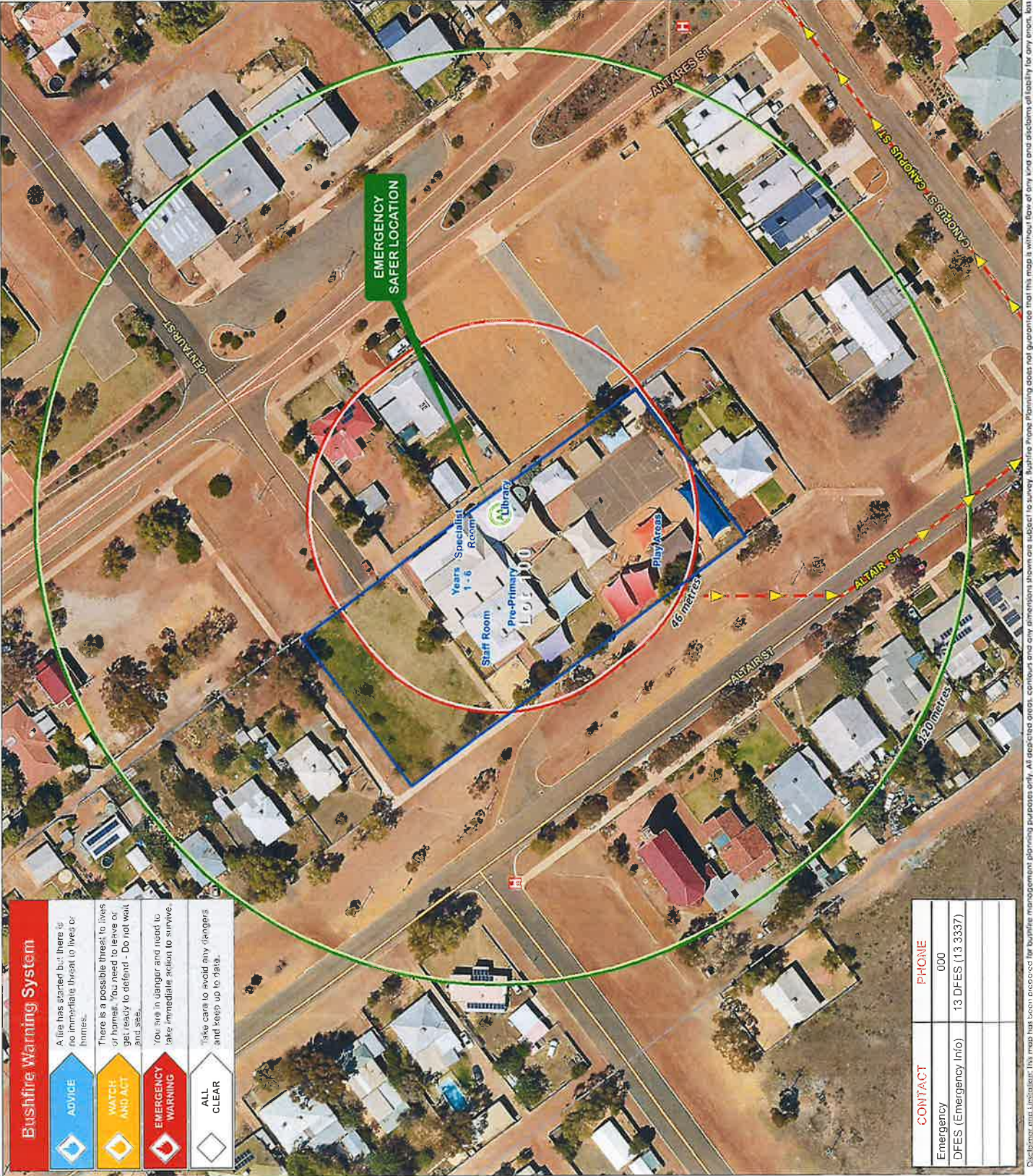


LOCALITY



Aerial Imagery : Landgate/SIP
 Image Date : Oct 2017

Coordinates: GDA 1984 MGA Zone 56
 Projection: Universal Transverse Mercator Units: Metres
 Map compiled by: Ian Ross 27/11/2019
 Map updated by: Ian Ross 27/11/2019



Bushfire Warning System

ADVICE

A fire has started but there is no immediate threat to lives or homes.

WATCH AND ACT

There is a possible threat to lives or homes. You need to leave or get ready to defend - Do not wait and see.

EMERGENCY WARNING

You are in danger and need to take immediate action to survive.

ALL CLEAR

Take care to avoid any dangers and keep up to date.

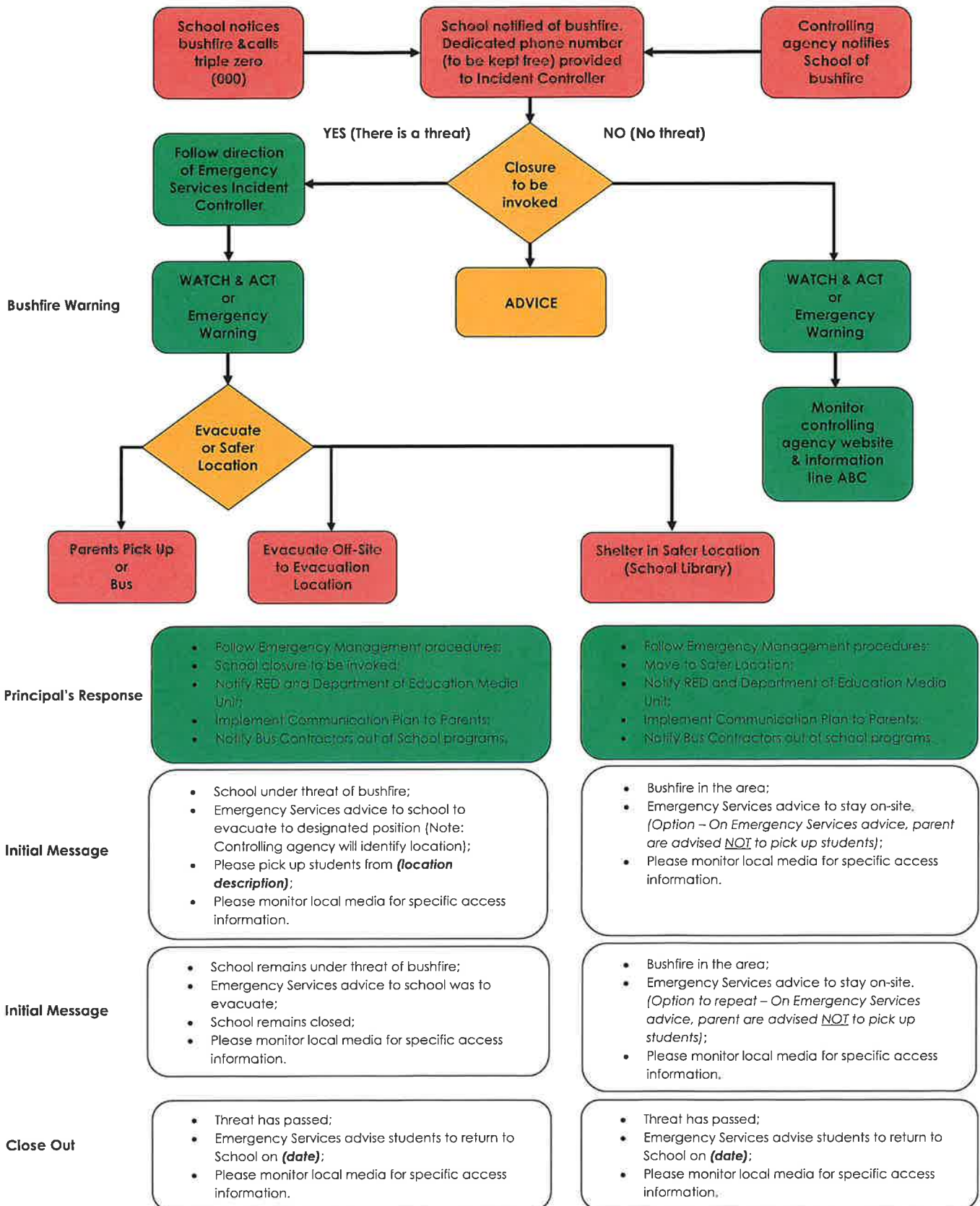
CONTACT	PHONE
Emergency	000
DFES (Emergency Info)	13 DFES (13 3337)

Disclaimer: This map has been produced for bushfire management planning purposes only. All depicted areas, contours and other features shown are subject to surveying, mapping and planning. Private Planning does not guarantee that this map is without flaw or any loss and disclaims all liability for any error, loss or other consequence arising from relying on any information depicted. Map Document: File: / Home/kyimgpoc\1\obj\2018\160230 - St Joseph's Southern Cross (CERN) Stand Alone Aerial Map (Working) V04\160230_160230 - St Joseph's Southern Cross (CERN)_A3.mxd



Appendix 7 – Communication Plan

PRINCIPAL'S RESPONSE TO BUSHFIRE WHEN SCHOOL IS OPEN





Appendix 8 – Emergency Response Contact List

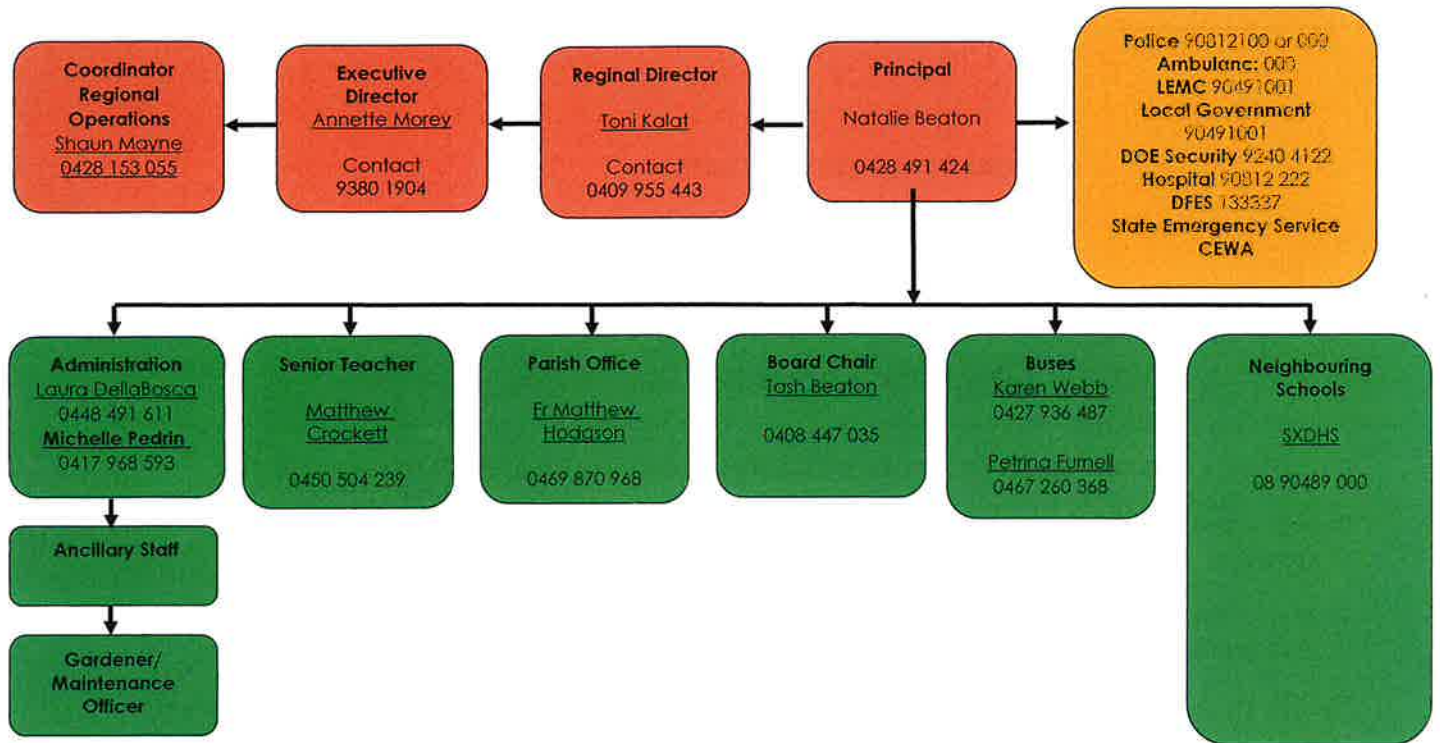
NAME OF ORGANISATION	SERVICE	PHONE NUMBER WEB SITE
STATE CONTACTS		
Life-Threatening Emergencies	Fire / Ambulance / Police	000
Catholic Education of WA (CEWA)	Head Office (Leederville)	(08) 6380 5200
Department of Fire & Emergency Services (DFES)	Emergency Information	13 33 37 www.dfes.wa.gov.au
Department of Fire & Emergency Services (DFES)	Recorded Information Line	1300 657 209
Department of Fire & Emergency Services (DFES)	Head Office (Emergency Services Complex)	+61 8 9395 9300
Poisons Information line	Advice on suspected poisonings 24hrs	13 11 26
Bureau of Meteorology (BOM)	Full State Service	1900 955 366
WA Police	Police matters (Non-emergency)	131 444
State Emergency Service (SES)	Various Emergency Services	13 25 00
Red Cross	Emergency Humanitarian Assistance	1800 733 276
Salvation Army	State Office	(08) 9260 9500
Royal Flying Doctor Service (RFDS)	Medical Services (Kalgoorlie)	(08) 9000 2140
Royal Flying Doctor Service (RFDS)	Medical Services (Jandakot)	(08) 9417 6309
Western Power	Power outages, lines down	13 23 51
Horizon Power	Power outages	(08) 9166 4700
Department of Transport and Main Roads	Road Conditions	13 81 38
Department of Child Protection and Family Support	Crisis Care	(08) 9222 2555 A/H – (08) 9223 1111

Appendix 8 – Emergency Response Contact List

NAME OF ORGANISATION	SERVICE	PHONE NUMBER WEB SITE
LOCAL CONTACTS		
Police	Local Police matters (Non-emergency)	131 444
SX Police	Police	08 9081 2100
SX Hospital	Medical	08 9081 2222
Shire of Yilgarn	Local Government	08 9049 1001
Shire of Yilgarn	LEMC Ben Forbes	0407 491 027
SX Fire & Rescue	Volunteer Fire Service-non emergency	08 9049 1350
Bus Contractor	Marvel Loch Bus, Karen Webb Bullfinch Bus, Petrina Furnell	0427 936 487 0467 260 368
Shire of Yilgarn	Ranger Service	0419 867 317
CEWA HEAD OFFICE		
Executive Director	Annette Morey	9380 1904
CEWA SIA	Toni Kalat	0409 955 443
CEWA	Shaun Mayne	0428 153 055
CEWA	Marketing & Communications	08 6380 5189
DOE	Central Services	08 9264 4111
SCHOOL CONTACTS		
Principal	Natalie Beaton	0428 491 424
Finance Officer	Laura DellaBosca	0448 491 611
Admin Officer	Michelle Pedrin	0417 968 593

Parish Priest	Father Matthew	0469 870 968
SAC Chair	Tash Beaton	0408 447 035
P & F Chair	Sarah Tucker	0449 996 125

Appendix 9 – Communication Tree



Appendix 10 – Preparedness: Bushfire Preparedness Checklist

BUSHFIRE PREPAREDNESS CHECKLIST

TAKE ACTION IF THE SCHOOL IS OPEN WHEN A BUSHFIRE STARTS

IF YOU NOTICE A BUSHFIRE BEFORE RECEIVING OFFICIAL ADVICE, CALL TRIPLE ZERO (000) TO REPORT THE FIRE.	TICK WHEN TASK COMPLETED
IF THE SCHOOL IS LIKELY TO BE THREATENED BY THE BUSHFIRE, ACTIVATE THE STAND-ALONE BUSHFIRE PLAN IMMEDIATELY.	
All staff members have been briefed on the and are ready to activate in accordance with their responsibilities in the plans.	
The Principal or School liaison officer has made contact with the controlling agency to seek advice or further information on the Schools required response to the bushfire.	
Communication plans (including Communication Tree) are ready for activation for directed evacuation.	
Emergency contact lists for parents, staff, other agencies etc. is prepared and ready to use.	
School emergency warning or alert system is ready to be sounded.	
Emergency communications equipment is ready for use (e.g. mobile telephones, hand-operated fire alarm (portable Siren), portable radios and spare batteries/batteries charged).	
Evacuation kit is ready to use.	
Class rolls and visitor register are available and ready to use (part of evacuation kit).	
Class rolls checked to confirm absentees and visitor register checked for visitors currently in the School.	
First aid equipment is ready to use and staff members trained in first aid have been activated.	
The Safer Building Location (not an outdoor open area) is ready for use.	
School buses are on standby or arrangements in place, if off-site evacuation is required.	
Monitor controlling agency website or information line for warnings (if DFES on 13 DFES (13 33 37) or www.dfes.wa.gov.au) and Emergency WA website: www.emergency.wa.gov.au . Assign a member of staff to monitor local radio, TV and websites for bushfire or weather alerts.	
Bushfire in awareness zone: Close roof/wall vents and doors. Undertake regular patrols/checks of School for bushfire activity, paying special attention to evaporative air conditioners, where applicable. School bags, clothing & other flammable items should be removed from outside of classrooms & Safer Building Location.	
Principal thoroughly familiar with current Stand-alone Bushfire Plan & The Principal's Guide to Bushfire - additional 'situation' checklists.	

Schools on the Bushfire Zone Register understand the bushfire warning system (refer Appendix 2) and the Emergency WA Website & the National Emergency Alert telephone warning system www.emergencyalert.gov.au	Yes
Schools on the Bushfire Zone Register need to incorporate key bushfire messages in the curriculum.	Yes
School staff know how to turn off evaporative air conditioner units, including awareness of the location of the switches, and how to close roof vents (if applicable).	N/A
Communication plans (including Communications Tree – see Appendix 9) are in place for directed evacuation or planned closure.	Yes
Evacuation drills practised prior to the start of the bushfire season and at least once per term during the bushfire season. The bushfire season typically runs from late October to April in southern WA and May to late October in northern WA. Note this is a minimum of three drills per year.	Yes
School has a correctly functioning emergency warning or alert system.	Yes
Evacuation Kit has been checked at least twice per term.	Yes
Emergency communications equipment is available e.g. mobile telephones, hand-operated fire alarm (portable siren), portable radios and spare batteries (check throughout the season).	Yes
Class rolls and visitor register (or equivalent) are readily accessible in an emergency to account for students, staff and visitors.	Yes
First aid equipment is available and staff members trained in first aid have been identified.	Yes
Arrangements are in place in relation to School buses (notification of contractors if pre-emptive closure is invoked; availability of buses if off-site evacuation is required).	Yes
Procedures are in place to restrict use of machinery (e.g. angle grinders, mowers, and machinery with internal combustion engines) in close proximity to bushfire fuels where they may start a fire on severe fire danger days.	Yes
A Safer Building Location within the School buildings should be identified and prepared in the event that an off-site evacuation is not possible. (Appendix 6)	Yes
More than one suitable off-site location needs to be identified, in case one of the sites is under threat from the bushfire.	Yes
Asset Protection Zones (APZ) minimum 20 metre radius around all buildings, cleared of all rubbish, long dry grass, bark, dead fallen branches and flammable materials. An APZ of XXm around Safer Location Building (where APZ falls within School grounds), refer to Bushfire Risk Treatment notes if applicable for this distance.	N/A
Mitigation works as per bushfire consultant recommendations, have been implemented.	Yes